

CRAFTIVISTS VERSUS COVID-19

MILLION MASK

challenge

Basic Scrub Cap



VERSION 1.0, 4-19-2020

FOR HELP:

www.facebook.com/groups/millionmaskchallenge

millionmaskchallenge.com/information

info@millionmaskchallenge.com

Please try to find an answer on Facebook before emailing!

This guide was prepared by our pattern committee, based on the pattern by Lifebox Foundation. We have tweaked the instructions with an eye to helping beginning sewists. These caps are required by some hospitals and are in scarce supply. Without access to caps, some nurses around the world have taken drastic measures, such as shaving their heads. Thank you for helping us be able to provide these caps.

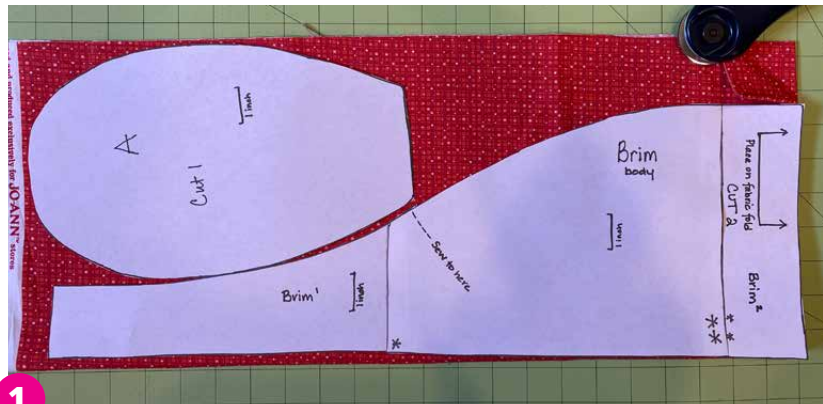
Supplies:

- Cotton Fabric - ½ yard, 44 inches wide
- Pattern printed at 100%, taped together as indicated
- Pins, clips, sharp fabric scissors, ruler, fabric marking pen or chalk
- Thread, matching or contrasting (Maker's choice!)
- Chopstick or knitting needle to push out corners
- Iron

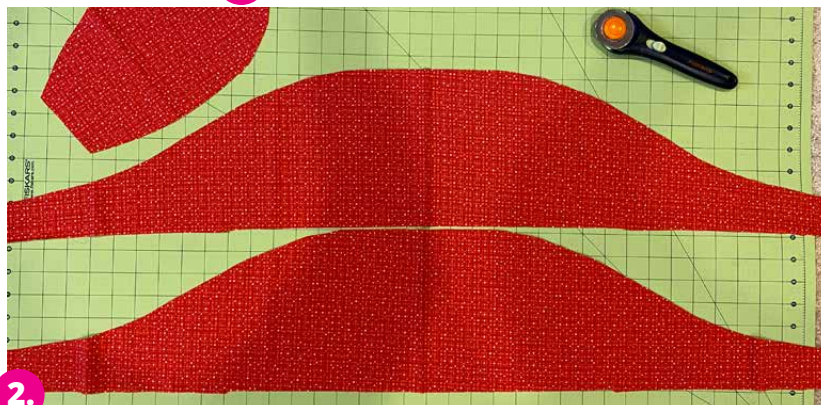
Instructions:

1. Print the pattern.

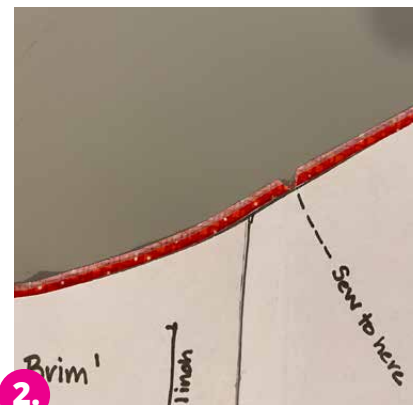
- Print out the pattern pieces at 100%, making sure that the 1-inch line = 1 inch.
- Assemble the paper pieces: cut out and tape together brim pieces by matching * and ** together as indicated.



1.



2.



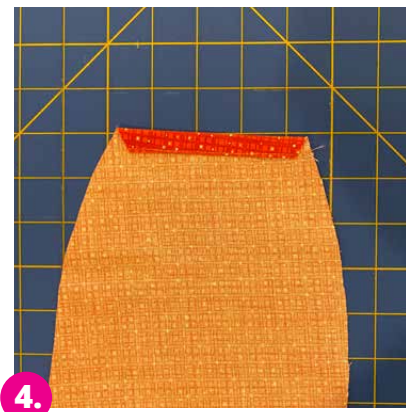
2.

2. Cut and mark fabric.

- Fold fabric in half the long way, selvage edge to selvage edge (as it would have come off the bolt). Fold in half again the short way, folded edges aligned so there are four layers of fabric.
- Position the brim piece on fold as indicated. Pin and cut through all four layers to make 2 complete brim pieces.
- Cut 1 crown piece from single layer of remaining fabric.
- Clip fabric edge or mark "sew to mark" onto the edge of brim pieces.

3. Make the brim.

- Place brim pieces right sides together. Pin around the edge.
- Sew around the two pieces from sewing mark to sewing mark using $\frac{3}{8}$ inch seam (or edge of presser foot as guide).
- Leave top, curved edge open.
- Clip corners of tie ends to reduce bulk. Carefully turn right side out, using a chopstick or other implement to fully push the corners out. Iron entire brim.



4. Prepare crown piece.

- Press a double-fold hem - $\frac{1}{4}$ inch first fold, then fold over, and iron. Stitch in place.

5. Make the cap.

- Pin top of crown onto the brim by folding both pieces in half and lining up the centers - right sides together.
- Pin crown to brim all around the curve.
- Sew around pinned edge with $\frac{3}{8}$ inch seam allowance (or edge of presser foot as guide). Backstitch at beginning and end of stitching to reinforce. Zigzag around edge of crown to prevent fraying.
- Topstitch around edges of brim and ties, to help maintain shape when washed.



Please tell us when you have completed any caps, as part of our challenge, here:
millionmaskchallenge.com/masks-ready



Crown

Cut 1

1 inch



**

1 inch



Brim

Body

Cut 2

..... Sew to here

*

Overlay/Tape to Fit

*

1 inch



Brim

Ties

Place on Fabric Fold

**

Overlap/Tape Pattern